

# MISSING



**POLAR BEARS-** “FOR POLAR BEARS—EVERYTHING BEGINS AND ENDS WITH ICE, OR MORE TO THE POINT, WITH THE ICE EDGE. FOR THE BEARS, THAT EDGE IS THE THIN LINE BETWEEN LIFE AND DEATH. **IF SEA ICE CONTINUES TO MELT AT ITS CURRENT RATE, SCIENTISTS BELIEVE TWO-THIRDS OF THE WORLD’S 20,000 TO 25,000 POLAR BEARS COULD BE GONE BY 2050.**” DEFENDERS OF WILDLIFE MAGAZINE WINTER 2015

**PLEASE CALL NOW!**

ASK YOUR REPRESENTATIVE TO SUPPORT THE  
ENDANGERED SPECIES ACT AND TO SUPPORT  
FEDERAL PROTECTION OF POLAR BEARS.

**[WWW.ENDANGERED.ORG](http://WWW.ENDANGERED.ORG)**

---

# MISSING

---



---

**POLAR BEARS-** “FOR POLAR BEARS—EVERYTHING BEGINS AND ENDS WITH ICE, OR MORE TO THE POINT, WITH THE ICE EDGE. FOR THE BEARS, THAT EDGE IS THE THIN LINE BETWEEN LIFE AND DEATH. **IF SEA ICE CONTINUES TO MELT AT ITS CURRENT RATE, SCIENTISTS BELIEVE TWO-THIRDS OF THE WORLD’S 20,000 TO 25,000 POLAR BEARS COULD BE GONE BY 2050.**” DEFENDERS OF WILDLIFE MAGAZINE WINTER 2015

**PLEASE CALL NOW!**

ASK YOUR REPRESENTATIVE TO SUPPORT THE  
ENDANGERED SPECIES ACT AND TO SUPPORT  
FEDERAL PROTECTION OF POLAR BEARS.

---

[WWW.ENDANGERED.ORG](http://WWW.ENDANGERED.ORG)



---

# MISSING

---



---

**POLAR BEARS-** “FOR POLAR BEARS—EVERYTHING BEGINS AND ENDS WITH ICE, OR MORE TO THE POINT, WITH THE ICE EDGE. FOR THE BEARS, THAT EDGE IS THE THIN LINE BETWEEN LIFE AND DEATH. **IF SEA ICE CONTINUES TO MELT AT ITS CURRENT RATE, SCIENTISTS BELIEVE TWO-THIRDS OF THE WORLD’S 20,000 TO 25,000 POLAR BEARS COULD BE GONE BY 2050.**” DEFENDERS OF WILDLIFE MAGAZINE WINTER 2015

**PLEASE CALL NOW!**

**ASK YOUR REPRESENTATIVE TO SUPPORT THE  
ENDANGERED SPECIES ACT AND TO SUPPORT  
FEDERAL PROTECTION OF POLAR BEARS.**

---

**[WWW.ENDANGERED.ORG](http://WWW.ENDANGERED.ORG)**

---

# MISSING

---



---

**POLAR BEARS-** “FOR POLAR BEARS—EVERYTHING BEGINS AND ENDS WITH ICE, OR MORE TO THE POINT, WITH THE ICE EDGE. FOR THE BEARS, THAT EDGE IS THE THIN LINE BETWEEN LIFE AND DEATH. **IF SEA ICE CONTINUES TO MELT AT ITS CURRENT RATE, SCIENTISTS BELIEVE TWO-THIRDS OF THE WORLD’S 20,000 TO 25,000 POLAR BEARS COULD BE GONE BY 2050.**” DEFENDERS OF WILDLIFE MAGAZINE WINTER 2015

**PLEASE CALL NOW!**

**ASK YOUR REPRESENTATIVE TO SUPPORT THE  
ENDANGERED SPECIES ACT AND TO SUPPORT  
FEDERAL PROTECTION OF POLAR BEARS.**

---

**[WWW.ENDANGERED.ORG](http://WWW.ENDANGERED.ORG)**



---

# MISSING

---

---

**POLAR BEARS-** “FOR POLAR BEARS—EVERYTHING BEGINS AND ENDS WITH ICE, OR MORE TO THE POINT, WITH THE ICE EDGE. FOR THE BEARS, THAT EDGE IS THE THIN LINE BETWEEN LIFE AND DEATH. **IF SEA ICE CONTINUES TO MELT AT ITS CURRENT RATE, SCIENTISTS BELIEVE TWO-THIRDS OF THE WORLD’S 20,000 TO 25,000 POLAR BEARS COULD BE GONE BY 2050.**” DEFENDERS OF WILDLIFE MAGAZINE WINTER 2015

**PLEASE CALL NOW!**

**ASK YOUR REPRESENTATIVE TO SUPPORT THE  
ENDANGERED SPECIES ACT AND TO SUPPORT  
FEDERAL PROTECTION OF POLAR BEARS.**

---

**WWW.ENDANGERED.ORG**

---

# MISSING

---



---

**SOUTHERN POPULATION OF THE ORCA-** “ORCAS ARE HIGHLY SOCIAL ANIMALS THAT TRAVEL IN GROUPS CALLED PODS. PODS USUALLY CONSIST OF 5 - 30 WHALES, ALTHOUGH SOME PODS MAY COMBINE TO FORM A GROUP OF 100 OR MORE. ORCAS ESTABLISH SOCIAL HIERARCHIES, AND PODS ARE LED BY FEMALES. THE SOUTHERN RESIDENT POD OF ORCAS WAS LISTED AS ENDANGERED IN 2005 WHEN THERE WERE 88 ORCAS. NOW, A DECADE LATER, THERE ARE 81. THIS POD IS AMONG THE EIGHT MOST ENDANGERED SPECIES, ACCORDING TO NOAA.

**PLEASE CALL NOW!**

**ASK YOUR REPRESENTATIVE TO SUPPORT THE  
ENDANGERED SPECIES ACT AND TO SUPPORT  
FEDERAL PROTECTION OF THE SOUTHERN  
POPULATION OF THE ORCAS.**

---

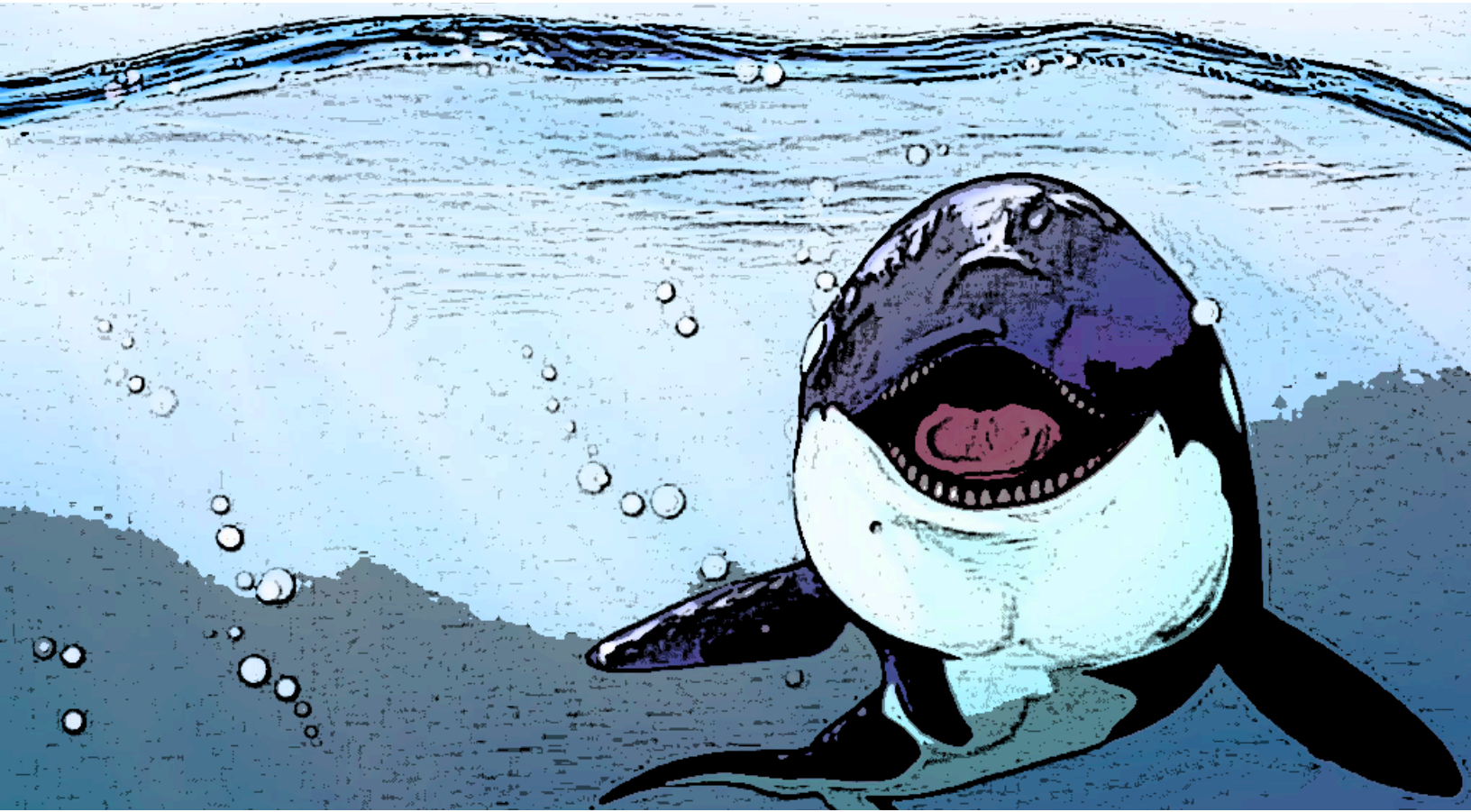
**[WWW.ENDANGERED.ORG](http://WWW.ENDANGERED.ORG)**



---

# MISSING

---



---

**SOUTHERN POPULATION OF THE ORCA-** “ORCAS ARE HIGHLY SOCIAL ANIMALS THAT TRAVEL IN GROUPS CALLED PODS. PODS USUALLY CONSIST OF 5 - 30 WHALES, ALTHOUGH SOME PODS MAY COMBINE TO FORM A GROUP OF 100 OR MORE. ORCAS ESTABLISH SOCIAL HIERARCHIES, AND PODS ARE LED BY FEMALES. THE SOUTHERN RESIDENT POD OF ORCAS WAS LISTED AS ENDANGERED IN 2005 WHEN THERE WERE 88 ORCAS. NOW, A DECADE LATER, THERE ARE 81. THIS POD IS AMONG THE EIGHT MOST ENDANGERED SPECIES, ACCORDING TO NOAA.

**PLEASE CALL NOW!**

**ASK YOUR REPRESENTATIVE TO SUPPORT THE  
ENDANGERED SPECIES ACT AND TO SUPPORT  
FEDERAL PROTECTION OF THE SOUTHERN  
POPULATION OF THE ORCAS.**

---

**[WWW.ENDANGERED.ORG](http://WWW.ENDANGERED.ORG)**

---

# MISSING

---



---

**SOUTHERN POPULATION OF THE ORCA-** “ORCAS ARE HIGHLY SOCIAL ANIMALS THAT TRAVEL IN GROUPS CALLED PODS. PODS USUALLY CONSIST OF 5 - 30 WHALES, ALTHOUGH SOME PODS MAY COMBINE TO FORM A GROUP OF 100 OR MORE. ORCAS ESTABLISH SOCIAL HIERARCHIES, AND PODS ARE LED BY FEMALES. THE SOUTHERN RESIDENT POD OF ORCAS WAS LISTED AS ENDANGERED IN 2005 WHEN THERE WERE 88 ORCAS. NOW, A DECADE LATER, THERE ARE 81. THIS POD IS AMONG THE EIGHT MOST ENDANGERED SPECIES, ACCORDING TO NOAA.

**PLEASE CALL NOW!**

**ASK YOUR REPRESENTATIVE TO SUPPORT THE  
ENDANGERED SPECIES ACT AND TO SUPPORT  
FEDERAL PROTECTION OF THE SOUTHERN  
POPULATION OF THE ORCAS.**

---

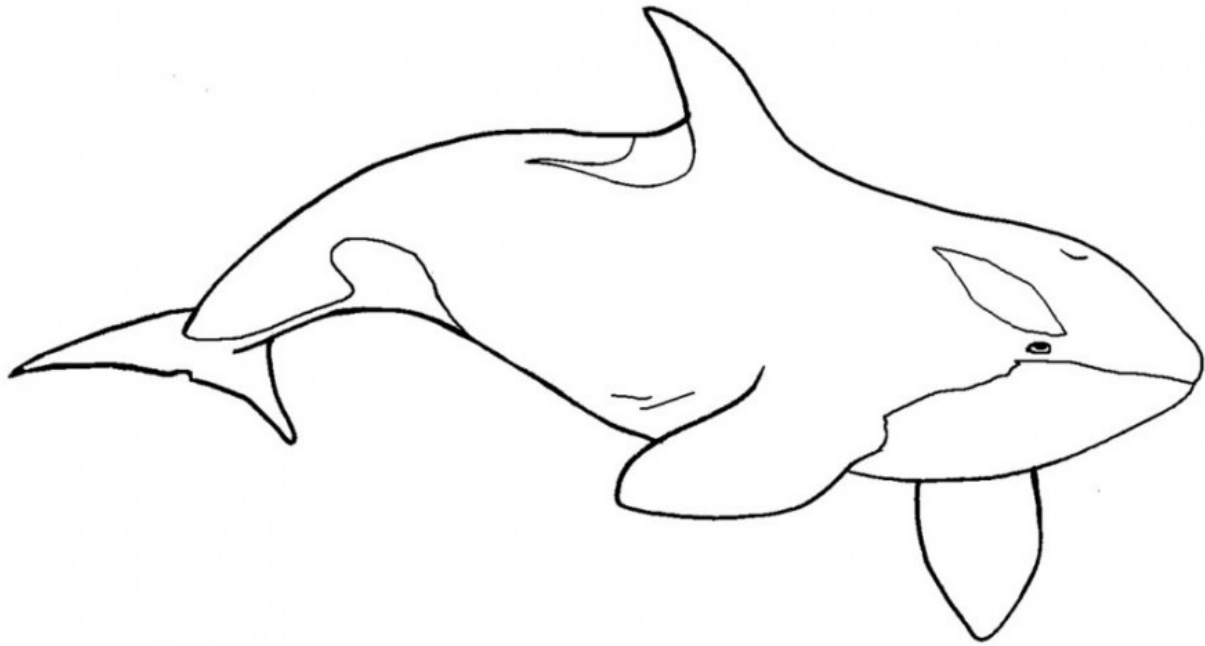
**[WWW.ENDANGERED.ORG](http://WWW.ENDANGERED.ORG)**



---

# MISSING

---



---

**SOUTHERN POPULATION OF THE ORCA-** “ORCAS ARE HIGHLY SOCIAL ANIMALS THAT TRAVEL IN GROUPS CALLED PODS. PODS USUALLY CONSIST OF 5 - 30 WHALES, ALTHOUGH SOME PODS MAY COMBINE TO FORM A GROUP OF 100 OR MORE. ORCAS ESTABLISH SOCIAL HIERARCHIES, AND PODS ARE LED BY FEMALES. THE SOUTHERN RESIDENT POD OF ORCAS WAS LISTED AS ENDANGERED IN 2005 WHEN THERE WERE 88 ORCAS. NOW, A DECADE LATER, THERE ARE 81. THIS POD IS AMONG THE EIGHT MOST ENDANGERED SPECIES, ACCORDING TO NOAA.

**PLEASE CALL NOW!**

**ASK YOUR REPRESENTATIVE TO SUPPORT THE  
ENDANGERED SPECIES ACT AND TO SUPPORT  
FEDERAL PROTECTION OF THE SOUTHERN  
POPULATION OF THE ORCAS.**

---

**WWW.ENDANGERED.ORG**

---

# MISSING

---

---

**SOUTHERN POPULATION OF THE ORCA-** “ORCAS ARE HIGHLY SOCIAL ANIMALS THAT TRAVEL IN GROUPS CALLED PODS. PODS USUALLY CONSIST OF 5 - 30 WHALES, ALTHOUGH SOME PODS MAY COMBINE TO FORM A GROUP OF 100 OR MORE. ORCAS ESTABLISH SOCIAL HIERARCHIES, AND PODS ARE LED BY FEMALES. THE SOUTHERN RESIDENT POD OF ORCAS WAS LISTED AS ENDANGERED IN 2005 WHEN THERE WERE 88 ORCAS. NOW, A DECADE LATER, THERE ARE 81. THIS POD IS AMONG THE EIGHT MOST ENDANGERED SPECIES, ACCORDING TO NOAA.

**PLEASE CALL NOW!**

**ASK YOUR REPRESENTATIVE TO SUPPORT THE  
ENDANGERED SPECIES ACT AND TO SUPPORT  
FEDERAL PROTECTION OF THE SOUTHERN  
POPULATION OF THE ORCAS.**

---

**WWW.ENDANGERED.ORG**



---

# MISSING

---



---

**GREATER SAGE-GROUSE** HAS SEEN ITS RANGE CUT IN HALF AND ITS POPULATION DECREASED 93 PERCENT FROM HISTORIC NUMBERS. THESE BIRDS ARE ENTIRELY DEPENDENT ON SAGEBRUSH FOR FOOD, SHELTER AND NESTING AND RAISING THEIR YOUNG. THEY ARE MOST WELL KNOWN FOR THEIR BEAUTIFUL, DRAMATIC DANCES.

**PLEASE CALL NOW!**

ASK YOUR REPRESENTATIVE TO SUPPORT THE  
ENDANGERED SPECIES ACT AND TO SUPPORT FEDERAL  
PROTECTION OF THE GREATER SAGE-GROUSE.

---

**[WWW.ENDANGERED.ORG](http://WWW.ENDANGERED.ORG)**

---

# MISSING

---



---

**GREATER SAGE-GROUSE** HAS SEEN ITS RANGE CUT IN HALF AND ITS POPULATION DECREASED 93 PERCENT FROM HISTORIC NUMBERS. THESE BIRDS ARE ENTIRELY DEPENDENT ON SAGEBRUSH FOR FOOD, SHELTER AND NESTING AND RAISING THEIR YOUNG. THEY ARE MOST WELL KNOWN FOR THEIR BEAUTIFUL, DRAMATIC DANCES.

**PLEASE CALL NOW!**

ASK YOUR REPRESENTATIVE TO SUPPORT THE  
ENDANGERED SPECIES ACT AND TO SUPPORT FEDERAL  
PROTECTION OF THE GREATER SAGE-GROUSE.

---

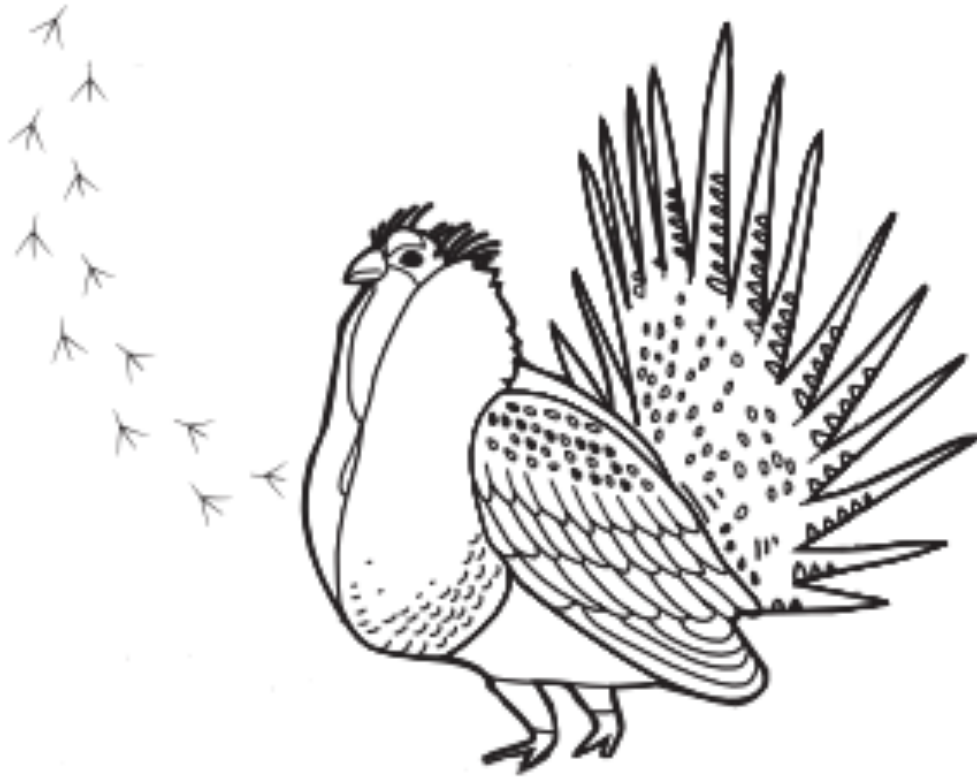
**[WWW.ENDANGERED.ORG](http://WWW.ENDANGERED.ORG)**



---

# MISSING

---



---

**GREATER SAGE-GROUSE** HAS SEEN ITS RANGE CUT IN HALF AND ITS POPULATION DECREASED 93 PERCENT FROM HISTORIC NUMBERS. THESE BIRDS ARE ENTIRELY DEPENDENT ON SAGEBRUSH FOR FOOD, SHELTER AND NESTING AND RAISING THEIR YOUNG. THEY ARE MOST WELL KNOWN FOR THEIR BEAUTIFUL, DRAMATIC DANCES.

**PLEASE CALL NOW!**

ASK YOUR REPRESENTATIVE TO SUPPORT THE  
ENDANGERED SPECIES ACT AND TO SUPPORT FEDERAL  
PROTECTION OF THE GREATER SAGE-GROUSE.

---

**[WWW.ENDANGERED.ORG](http://WWW.ENDANGERED.ORG)**

---

# MISSING

---

---

**GREATER SAGE-GROUSE** HAS SEEN ITS RANGE CUT IN HALF AND ITS POPULATION DECREASED 93 PERCENT FROM HISTORIC NUMBERS. THESE BIRDS ARE ENTIRELY DEPENDENT ON SAGEBRUSH FOR FOOD, SHELTER AND NESTING AND RAISING THEIR YOUNG. THEY ARE MOST WELL KNOWN FOR THEIR BEAUTIFUL, DRAMATIC DANCES.

**PLEASE CALL NOW!**

ASK YOUR REPRESENTATIVE TO SUPPORT THE  
ENDANGERED SPECIES ACT AND TO SUPPORT FEDERAL  
PROTECTION OF THE GREATER SAGE-GROUSE.

---

**[WWW.ENDANGERED.ORG](http://WWW.ENDANGERED.ORG)**

---

# MISSING

---



---

**MONARCH BUTTERFLY** “WHAT’S HAPPENING TO MONARCH BUTTERFLIES IS NOTHING SHORT OF A MASSACRE. THE U.S. FISH AND WILDLIFE SERVICE SUMMED IT UP IN JUST ONE GRIM STATISTIC: **SINCE 1990, ABOUT 970 MILLION HAVE VANISHED.**”  
DARRYL FEARS, THE WASHINGTON POST

**PLEASE CALL NOW!**

**ASK YOUR REPRESENTATIVE TO SUPPORT THE  
ENDANGERED SPECIES ACT AND TO SUPPORT  
FEDERAL PROTECTION OF MONARCH BUTTERFLIES**

---

**[WWW.ENDANGERED.ORG](http://WWW.ENDANGERED.ORG)**



---

# MISSING

---



---

**MONARCH BUTTERFLY** “WHAT’S HAPPENING TO MONARCH BUTTERFLIES IS NOTHING SHORT OF A MASSACRE. THE U.S. FISH AND WILDLIFE SERVICE SUMMED IT UP IN JUST ONE GRIM STATISTIC: **SINCE 1990, ABOUT 970 MILLION HAVE VANISHED.**” DARRYL FEARS, THE WASHINGTON POST

**PLEASE CALL NOW!**

**ASK YOUR REPRESENTATIVE TO SUPPORT THE  
ENDANGERED SPECIES ACT AND TO SUPPORT  
FEDERAL PROTECTION OF MONARCH BUTTERFLIES**

---

**[WWW.ENDANGERED.ORG](http://WWW.ENDANGERED.ORG)**

---

# MISSING

---



---

**MONARCH BUTTERFLY** “WHAT’S HAPPENING TO MONARCH BUTTERFLIES IS NOTHING SHORT OF A MASSACRE. THE U.S. FISH AND WILDLIFE SERVICE SUMMED IT UP IN JUST ONE GRIM STATISTIC: **SINCE 1990, ABOUT 970 MILLION HAVE VANISHED.**” DARRYL FEARS, THE WASHINGTON POST

**PLEASE CALL NOW!**

**ASK YOUR REPRESENTATIVE TO SUPPORT THE  
ENDANGERED SPECIES ACT AND TO SUPPORT  
FEDERAL PROTECTION OF MONARCH BUTTERFLIES**

---

**[WWW.ENDANGERED.ORG](http://WWW.ENDANGERED.ORG)**

---

# MISSING

---



---

**MONARCH BUTTERFLY** “WHAT’S HAPPENING TO MONARCH BUTTERFLIES IS NOTHING SHORT OF A MASSACRE. THE U.S. FISH AND WILDLIFE SERVICE SUMMED IT UP IN JUST ONE GRIM STATISTIC: **SINCE 1990, ABOUT 970 MILLION HAVE VANISHED.**” DARRYL FEARS, THE WASHINGTON POST

**PLEASE CALL NOW!**

**ASK YOUR REPRESENTATIVE TO SUPPORT THE  
ENDANGERED SPECIES ACT AND TO SUPPORT  
FEDERAL PROTECTION OF MONARCH BUTTERFLIES**

---

**[WWW.ENDANGERED.ORG](http://WWW.ENDANGERED.ORG)**



---

# MISSING

---



---

**MONARCH BUTTERFLY** “WHAT’S HAPPENING TO MONARCH BUTTERFLIES IS NOTHING SHORT OF A MASSACRE. THE U.S. FISH AND WILDLIFE SERVICE SUMMED IT UP IN JUST ONE GRIM STATISTIC: **SINCE 1990, ABOUT 970 MILLION HAVE VANISHED.**” DARRYL FEARS, THE WASHINGTON POST

**PLEASE CALL NOW!**

ASK YOUR REPRESENTATIVE TO SUPPORT THE  
ENDANGERED SPECIES ACT AND TO SUPPORT  
FEDERAL PROTECTION OF MONARCH BUTTERFLIES

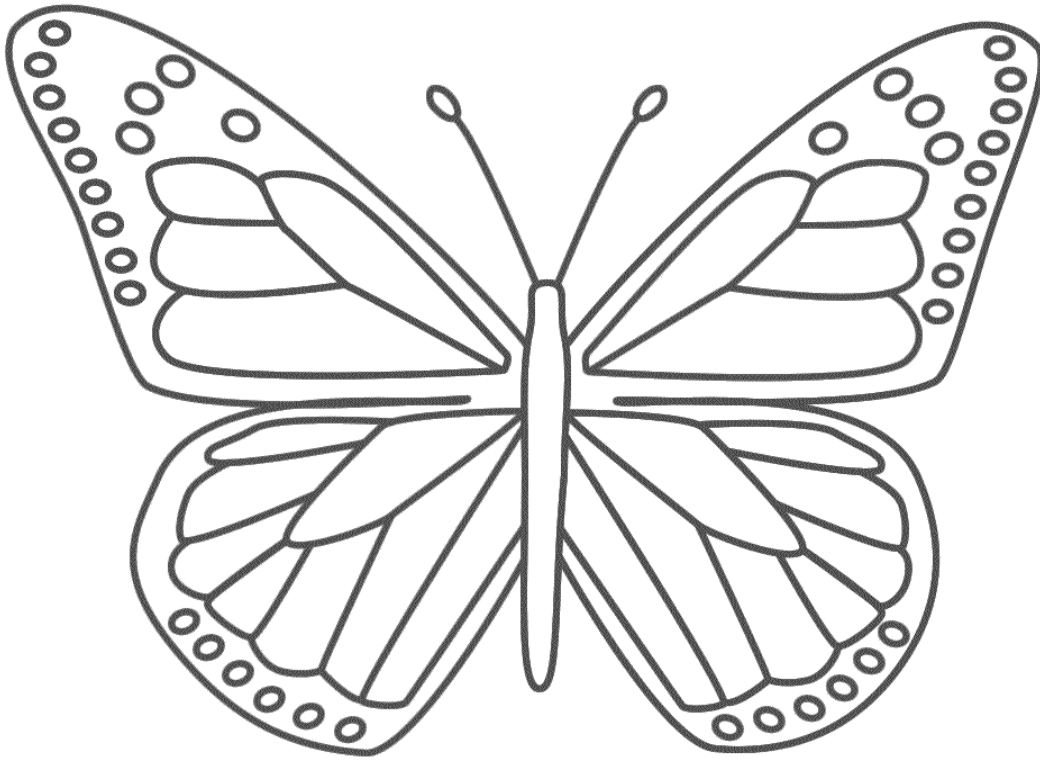
---

**[WWW.ENDANGERED.ORG](http://WWW.ENDANGERED.ORG)**

---

# MISSING

---



---

**MONARCH BUTTERFLY** “WHAT’S HAPPENING TO MONARCH BUTTERFLIES IS NOTHING SHORT OF A MASSACRE. THE U.S. FISH AND WILDLIFE SERVICE SUMMED IT UP IN JUST ONE GRIM STATISTIC: **SINCE 1990, ABOUT 970 MILLION HAVE VANISHED.**” DARRYL FEARS, THE WASHINGTON POST

**PLEASE CALL NOW!**

**ASK YOUR REPRESENTATIVE TO SUPPORT THE  
ENDANGERED SPECIES ACT AND TO SUPPORT  
FEDERAL PROTECTION OF MONARCH BUTTERFLIES**

---

**[WWW.ENDANGERED.ORG](http://WWW.ENDANGERED.ORG)**

---

# MISSING

---

---

**MONARCH BUTTERFLY** “WHAT’S HAPPENING TO MONARCH BUTTERFLIES IS NOTHING SHORT OF A MASSACRE. THE U.S. FISH AND WILDLIFE SERVICE SUMMED IT UP IN JUST ONE GRIM STATISTIC: **SINCE 1990, ABOUT 970 MILLION HAVE VANISHED.**” DARRYL FEARS, THE WASHINGTON POST

**PLEASE CALL NOW!**

**ASK YOUR REPRESENTATIVE TO SUPPORT THE  
ENDANGERED SPECIES ACT AND TO SUPPORT  
FEDERAL PROTECTION OF MONARCH BUTTERFLIES**

---

**[WWW.ENDANGERED.ORG](http://WWW.ENDANGERED.ORG)**



---

# MISSING

---



---

**MOUNTAIN YELLOW-LEGGED FROG-** “FROGS HAVE SURVIVED IN MORE OR LESS THEIR CURRENT FORM FOR 250 MILLION YEARS, HAVING SURVIVED COUNTLESS ICE AGES, ASTEROID CRASHES, AND OTHER ENVIRONMENTAL DISTURBANCES, YET NOW ONE-THIRD OF AMPHIBIAN SPECIES ARE ON THE VERGE OF EXTINCTION. THIS SHOULD SERVE AS AN ALARM CALL TO HUMANS THAT SOMETHING IS DRASTICALLY WRONG IN THE ENVIRONMENT.” **-SAVE THE FROGS!**

**PLEASE CALL NOW!**

ASK YOUR REPRESENTATIVE TO SUPPORT THE  
ENDANGERED SPECIES ACT AND TO SUPPORT  
FEDERAL PROTECTION OF MOUNTAIN YELLOW-  
LEGGED FROGS.

---

**[WWW.ENDANGERED.ORG](http://WWW.ENDANGERED.ORG)**

---

# MISSING

---



---

**MOUNTAIN YELLOW-LEGGED FROG-** “FROGS HAVE SURVIVED IN MORE OR LESS THEIR CURRENT FORM FOR 250 MILLION YEARS, HAVING SURVIVED COUNTLESS ICE AGES, ASTEROID CRASHES, AND OTHER ENVIRONMENTAL DISTURBANCES, YET NOW ONE-THIRD OF AMPHIBIAN SPECIES ARE ON THE VERGE OF EXTINCTION. THIS SHOULD SERVE AS AN ALARM CALL TO HUMANS THAT SOMETHING IS DRASTICALLY WRONG IN THE ENVIRONMENT.” **—SAVE THE FROGS!**

**PLEASE CALL NOW!**

**ASK YOUR REPRESENTATIVE TO SUPPORT THE  
ENDANGERED SPECIES ACT AND TO SUPPORT  
FEDERAL PROTECTION OF MOUNTAIN YELLOW-  
LEGGED FROGS.**

---

**[WWW.ENDANGERED.ORG](http://WWW.ENDANGERED.ORG)**

---

# MISSING

---



---

**MOUNTAIN YELLOW-LEGGED FROG-** “FROGS HAVE SURVIVED IN MORE OR LESS THEIR CURRENT FORM FOR 250 MILLION YEARS, HAVING SURVIVED COUNTLESS ICE AGES, ASTEROID CRASHES, AND OTHER ENVIRONMENTAL DISTURBANCES, YET NOW ONE-THIRD OF AMPHIBIAN SPECIES ARE ON THE VERGE OF EXTINCTION. THIS SHOULD SERVE AS AN ALARM CALL TO HUMANS THAT SOMETHING IS DRASTICALLY WRONG IN THE ENVIRONMENT.” **—SAVE THE FROGS!**

**PLEASE CALL NOW!**

**ASK YOUR REPRESENTATIVE TO SUPPORT THE  
ENDANGERED SPECIES ACT AND TO SUPPORT  
FEDERAL PROTECTION OF MOUNTAIN YELLOW-  
LEGGED FROGS.**

---

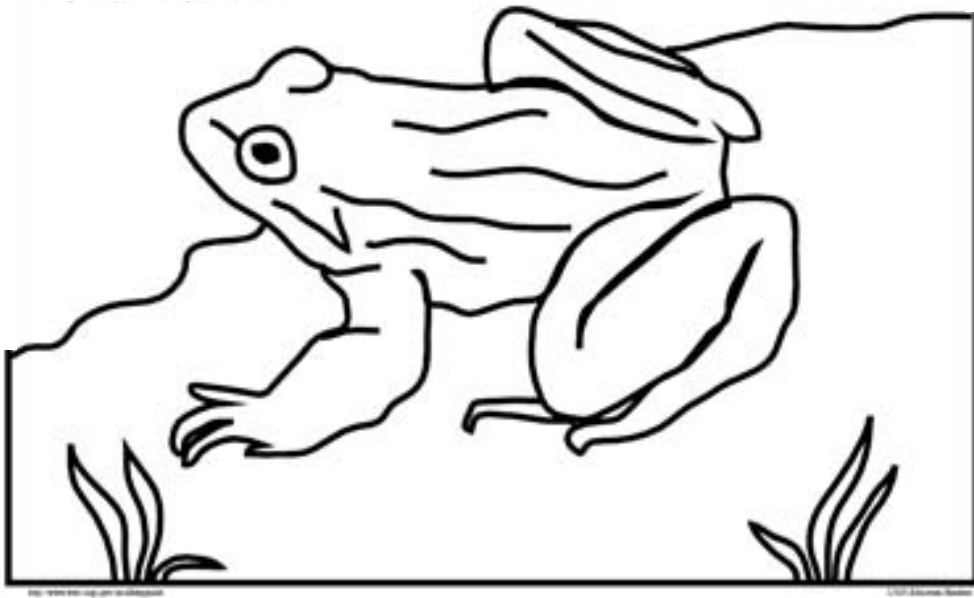
**[WWW.ENDANGERED.ORG](http://WWW.ENDANGERED.ORG)**



---

# MISSING

---



---

**MOUNTAIN YELLOW-LEGGED FROG-** “FROGS HAVE SURVIVED IN MORE OR LESS THEIR CURRENT FORM FOR 250 MILLION YEARS, HAVING SURVIVED COUNTLESS ICE AGES, ASTEROID CRASHES, AND OTHER ENVIRONMENTAL DISTURBANCES, YET NOW ONE-THIRD OF AMPHIBIAN SPECIES ARE ON THE VERGE OF EXTINCTION. THIS SHOULD SERVE AS AN ALARM CALL TO HUMANS THAT SOMETHING IS DRASTICALLY WRONG IN THE ENVIRONMENT.” **-SAVE THE FROGS!**

**PLEASE CALL NOW!**

ASK YOUR REPRESENTATIVE TO SUPPORT THE  
ENDANGERED SPECIES ACT AND TO SUPPORT  
FEDERAL PROTECTION OF MOUNTAIN YELLOW-  
LEGGED FROGS.

---

**[WWW.ENDANGERED.ORG](http://WWW.ENDANGERED.ORG)**

---

# MISSING

---

---

**MOUNTAIN YELLOW-LEGGED FROG-** “FROGS HAVE SURVIVED IN MORE OR LESS THEIR CURRENT FORM FOR 250 MILLION YEARS, HAVING SURVIVED COUNTLESS ICE AGES, ASTEROID CRASHES, AND OTHER ENVIRONMENTAL DISTURBANCES, YET NOW ONE-THIRD OF AMPHIBIAN SPECIES ARE ON THE VERGE OF EXTINCTION. THIS SHOULD SERVE AS AN ALARM CALL TO HUMANS THAT SOMETHING IS DRASTICALLY WRONG IN THE ENVIRONMENT.” **-SAVE THE FROGS!**

**PLEASE CALL NOW!**

**ASK YOUR REPRESENTATIVE TO SUPPORT THE  
ENDANGERED SPECIES ACT AND TO SUPPORT  
FEDERAL PROTECTION OF MOUNTAIN YELLOW-  
LEGGED FROGS.**

---

**[WWW.ENDANGERED.ORG](http://WWW.ENDANGERED.ORG)**

---

# MISSING

---



---

**RUSTY PATCHED BUMBLEBEE-** “IT'S ESTIMATED THAT CROSS-POLLINATION FROM BEES HELPS 30% OF THE WORLD'S FOOD CROPS AND 90% OF WILD PLANTS TO GROW. **THAT MEANS, WITHOUT BEES, MOST OF THE PLANTS, INCLUDING FOOD AND NATIVE PLANTS, WOULD GO EXTINCT.**” - [WWW.NRDC.ORG](http://WWW.NRDC.ORG)

**PLEASE CALL NOW!**

**ASK YOUR REPRESENTATIVE TO SUPPORT THE  
ENDANGERED SPECIES ACT AND TO SUPPORT  
FEDERAL PROTECTION OF RUSTY PATCHED  
BUMBLEBEES.**

---

**[WWW.ENDANGERED.ORG](http://WWW.ENDANGERED.ORG)**



---

# MISSING

---



---

**RUSTY PATCHED BUMBLEBEE-** “IT'S ESTIMATED THAT CROSS-POLLINATION FROM BEES HELPS 30% OF THE WORLD'S FOOD CROPS AND 90% OF WILD PLANTS TO GROW. **THAT MEANS, WITHOUT BEES, MOST OF THE PLANTS, INCLUDING FOOD AND NATIVE PLANTS, WOULD GO EXTINCT.**” - [WWW.NRDC.ORG](http://WWW.NRDC.ORG)

**PLEASE CALL NOW!**

**ASK YOUR REPRESENTATIVE TO SUPPORT THE  
ENDANGERED SPECIES ACT AND TO SUPPORT  
FEDERAL PROTECTION OF RUSTY PATCHED  
BUMBLEBEES.**

---

**[WWW.ENDANGERED.ORG](http://WWW.ENDANGERED.ORG)**

---

# MISSING

---



---

**RUSTY PATCHED BUMBLEBEE-** "IT'S ESTIMATED THAT CROSS-POLLINATION FROM BEES HELPS 30% OF THE WORLD'S FOOD CROPS AND 90% OF WILD PLANTS TO GROW. THAT MEANS, WITHOUT BEES, MOST OF THE PLANTS, INCLUDING FOOD AND NATIVE PLANTS, WOULD GO EXTINCT." - [WWW.NRDC.ORG](http://WWW.NRDC.ORG)

**PLEASE CALL NOW!**

**ASK YOUR REPRESENTATIVE TO SUPPORT THE  
ENDANGERED SPECIES ACT AND TO SUPPORT  
FEDERAL PROTECTION OF RUSTY PATCHED  
BUMBLEBEES.**

---

**[WWW.ENDANGERED.ORG](http://WWW.ENDANGERED.ORG)**

---

# MISSING

---



---

**RUSTY PATCHED BUMBLEBEE-** “IT'S ESTIMATED THAT CROSS-POLLINATION FROM BEES HELPS 30% OF THE WORLD'S FOOD CROPS AND 90% OF WILD PLANTS TO GROW. THAT MEANS, WITHOUT BEES, MOST OF THE PLANTS, INCLUDING FOOD AND NATIVE PLANTS, WOULD GO EXTINCT.” - [WWW.NRDC.ORG](http://WWW.NRDC.ORG)

**PLEASE CALL NOW!**

**ASK YOUR REPRESENTATIVE TO SUPPORT THE  
ENDANGERED SPECIES ACT AND TO SUPPORT  
FEDERAL PROTECTION OF RUSTY PATCHED  
BUMBLEBEES.**

---

[WWW.ENDANGERED.ORG](http://WWW.ENDANGERED.ORG)



---

# MISSING

---



---

**RUSTY PATCHED BUMBLEBEE-** “IT'S ESTIMATED THAT CROSS-POLLINATION FROM BEES HELPS 30% OF THE WORLD'S FOOD CROPS AND 90% OF WILD PLANTS TO GROW. THAT MEANS, WITHOUT BEES, MOST OF THE PLANTS, INCLUDING FOOD AND NATIVE PLANTS, WOULD GO EXTINCT.” - [WWW.NRDC.ORG](http://WWW.NRDC.ORG)

**PLEASE CALL NOW!**

**ASK YOUR REPRESENTATIVE TO SUPPORT THE  
ENDANGERED SPECIES ACT AND TO SUPPORT  
FEDERAL PROTECTION OF RUSTY PATCHED  
BUMBLEBEES.**

---

**[WWW.ENDANGERED.ORG](http://WWW.ENDANGERED.ORG)**

---

# MISSING

---

---

**RUSTY PATCHED BUMBLEBEE-** “IT'S ESTIMATED THAT CROSS-POLLINATION FROM BEES HELPS 30% OF THE WORLD'S FOOD CROPS AND 90% OF WILD PLANTS TO GROW. THAT MEANS, WITHOUT BEES, MOST OF THE PLANTS, INCLUDING FOOD AND NATIVE PLANTS, WOULD GO EXTINCT.” - [WWW.NRDC.ORG](http://WWW.NRDC.ORG)

**PLEASE CALL NOW!**

**ASK YOUR REPRESENTATIVE TO SUPPORT THE  
ENDANGERED SPECIES ACT AND TO SUPPORT  
FEDERAL PROTECTION OF RUSTY PATCHED  
BUMBLEBEES.**

---

**[WWW.ENDANGERED.ORG](http://WWW.ENDANGERED.ORG)**

---

# MISSING

---



---

**WHITEBARK PINE** - “WHITEBARK PINES ARE CONSIDERED A FOUNDATION SPECIES, BECAUSE THEY CREATE A STABLE ENVIRONMENT FOR OTHER TREES AND PLANTS. FIRST TO GROW IN HIGH-ELEVATION ENVIRONMENTS, THESE “NURSE TREES” COLONIZE AREAS FOLLOWING MAJOR DISTURBANCES, SUCH AS A FIRE OR AN AVALANCHE. ONCE THEY GROW, THEY PROVIDE SHELTER AND A GENTLER MICROENVIRONMENT IN WHICH OTHER SPECIES, SUCH AS FIRS AND SPRUCES, CAN GROW.” FROM [AMERICANFORESTS.ORG](http://AMERICANFORESTS.ORG)

**PLEASE CALL NOW!**

**ASK YOUR REPRESENTATIVE TO SUPPORT THE  
ENDANGERED SPECIES ACT AND TO SUPPORT  
FEDERAL PROTECTION OF WHITEBARK PINES.**

---

**[WWW.ENDANGERED.ORG](http://WWW.ENDANGERED.ORG)**



---

# MISSING

---



---

**WHITEBARK PINE** - "WHITEBARK PINES ARE CONSIDERED A FOUNDATION SPECIES, BECAUSE THEY CREATE A STABLE ENVIRONMENT FOR OTHER TREES AND PLANTS. FIRST TO GROW IN HIGH-ELEVATION ENVIRONMENTS, THESE "NURSE TREES" COLONIZE AREAS FOLLOWING MAJOR DISTURBANCES, SUCH AS A FIRE OR AN AVALANCHE. ONCE THEY GROW, THEY PROVIDE SHELTER AND A GENTLER MICROENVIRONMENT IN WHICH OTHER SPECIES, SUCH AS FIRS AND SPRUCES, CAN GROW." FROM AMERICANFORESTS.ORG

**PLEASE CALL NOW!**

**ASK YOUR REPRESENTATIVE TO SUPPORT THE  
ENDANGERED SPECIES ACT AND TO SUPPORT  
FEDERAL PROTECTION OF WHITEBARK PINES.**

---

**WWW.ENDANGERED.ORG**

---

# MISSING

---

---

**WHITEBARK PINE** - “WHITEBARK PINES ARE CONSIDERED A FOUNDATION SPECIES, BECAUSE THEY CREATE A STABLE ENVIRONMENT FOR OTHER TREES AND PLANTS. FIRST TO GROW IN HIGH-ELEVATION ENVIRONMENTS, THESE “NURSE TREES” COLONIZE AREAS FOLLOWING MAJOR DISTURBANCES, SUCH AS A FIRE OR AN AVALANCHE. ONCE THEY GROW, THEY PROVIDE SHELTER AND A GENTLER MICROENVIRONMENT IN WHICH OTHER SPECIES, SUCH AS FIRS AND SPRUCES, CAN GROW.”  
FROM AMERICANFORESTS.ORG

**PLEASE CALL NOW!**

**ASK YOUR REPRESENTATIVE TO SUPPORT THE  
ENDANGERED SPECIES ACT AND TO SUPPORT  
FEDERAL PROTECTION OF WHITEBARK PINES.**

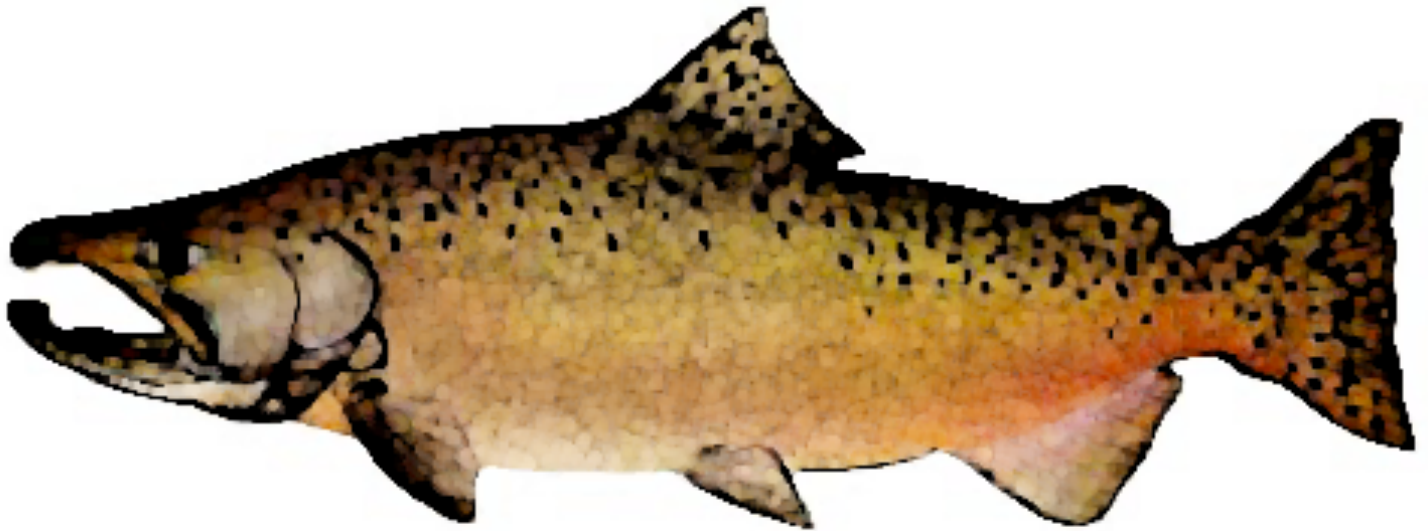
---

**WWW.ENDANGERED.ORG**

---

# MISSING

---



---

**CHINOOK SALMON-** CHINOOK SALMONS' MIGRATIONS ARE BREATHTAKING AND HEROIC— FROM THEIR BIRTH STREAM HUNDREDS OR THOUSANDS OF MILES TO THE OCEAN AND THEN BACK TO THEIR BIRTH STREAM AGAIN, NAVIGATING A MULTITUDE OF THREATS ALONG THE WAY. THEIR RETURN TO THE WATERS WHERE THEY WERE BORN, TO SPAWN A NEW GENERATION AND DIE, IS A CLASSIC TRAGEDY AND WILD HOPE COMBINED. FOR THE PEOPLE OF THE WEST, OUR HISTORY IS DEEPLY INTERTWINED WITH THEIRS.” — FROM CASALMON.ORG

**PLEASE CALL NOW!**

**ASK YOUR REPRESENTATIVE TO SUPPORT THE  
ENDANGERED SPECIES ACT AND TO SUPPORT  
FEDERAL PROTECTION OF THE CHINOOK SALMON.**

---

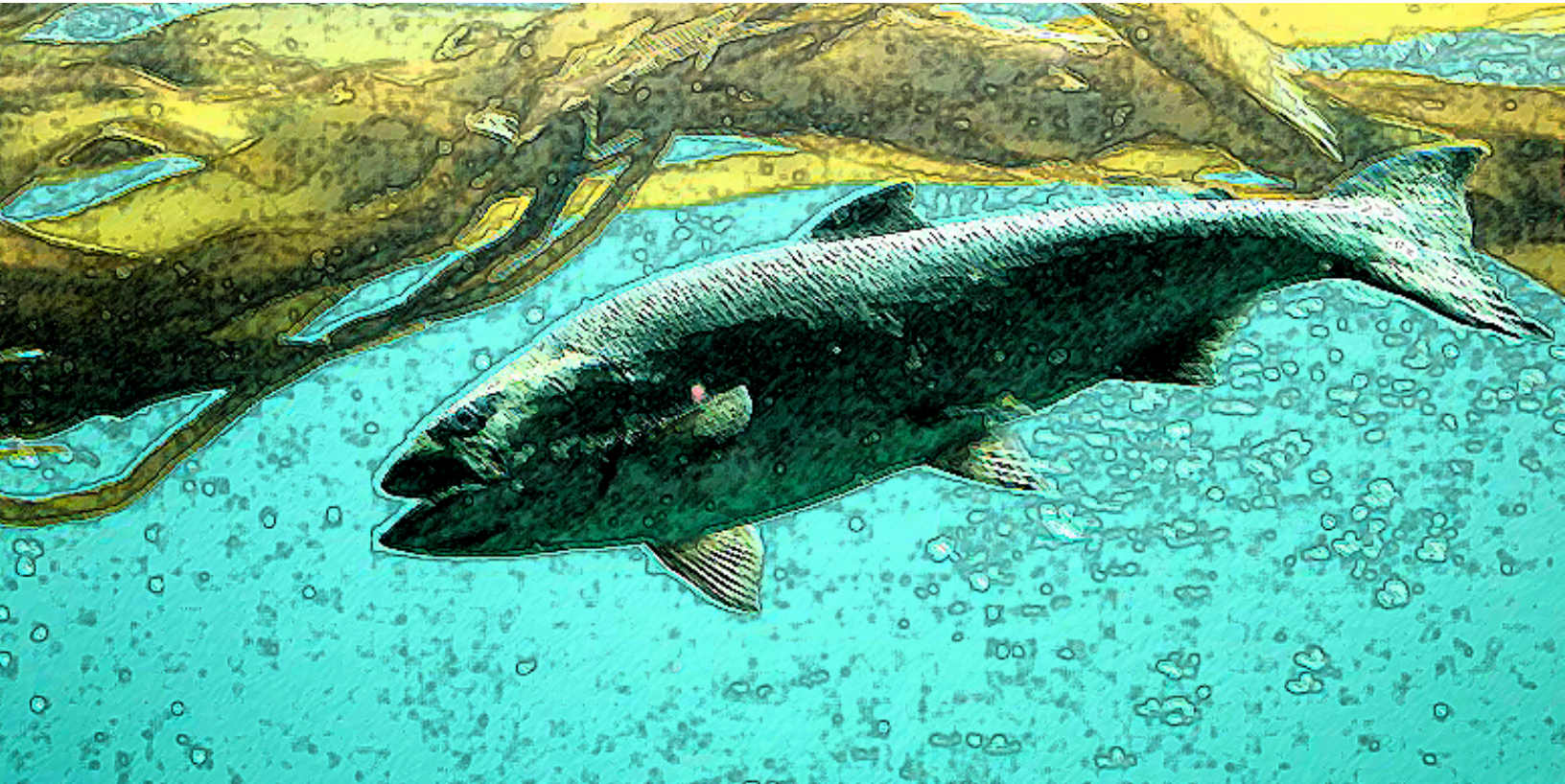
**[WWW.ENDANGERED.ORG](http://WWW.ENDANGERED.ORG)**



---

# MISSING

---



---

**CHINOOK SALMON-** CHINOOK SALMONS' MIGRATIONS ARE BREATHTAKING AND HEROIC— FROM THEIR BIRTH STREAM HUNDREDS OR THOUSANDS OF MILES TO THE OCEAN AND THEN BACK TO THEIR BIRTH STREAM AGAIN, NAVIGATING A MULTITUDE OF THREATS ALONG THE WAY. THEIR RETURN TO THE WATERS WHERE THEY WERE BORN, TO SPAWN A NEW GENERATION AND DIE, IS A CLASSIC TRAGEDY AND WILD HOPE COMBINED. FOR THE PEOPLE OF THE WEST, OUR HISTORY IS DEEPLY INTERTWINED WITH THEIRS.” — FROM CASALMON.ORG

**PLEASE CALL NOW!**

**ASK YOUR REPRESENTATIVE TO SUPPORT THE  
ENDANGERED SPECIES ACT AND TO SUPPORT  
FEDERAL PROTECTION OF THE CHINOOK SALMON.**

---

**[WWW.ENDANGERED.ORG](http://WWW.ENDANGERED.ORG)**

---

# MISSING

---



---

**CHINOOK SALMON-** CHINOOK SALMONS' MIGRATIONS ARE BREATHTAKING AND HEROIC— FROM THEIR BIRTH STREAM HUNDREDS OR THOUSANDS OF MILES TO THE OCEAN AND THEN BACK TO THEIR BIRTH STREAM AGAIN, NAVIGATING A MULTITUDE OF THREATS ALONG THE WAY. THEIR RETURN TO THE WATERS WHERE THEY WERE BORN, TO SPAWN A NEW GENERATION AND DIE, IS A CLASSIC TRAGEDY AND WILD HOPE COMBINED. FOR THE PEOPLE OF THE WEST, OUR HISTORY IS DEEPLY INTERTWINED WITH THEIRS.” — FROM CASALMON.ORG

**PLEASE CALL NOW!**

**ASK YOUR REPRESENTATIVE TO SUPPORT THE  
ENDANGERED SPECIES ACT AND TO SUPPORT  
FEDERAL PROTECTION OF THE CHINOOK SALMON.**

---

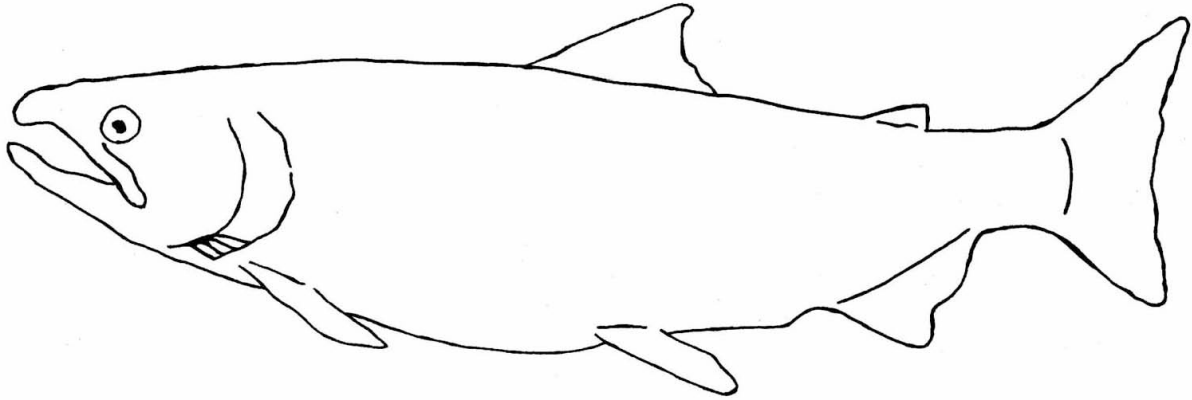
**[WWW.ENDANGERED.ORG](http://WWW.ENDANGERED.ORG)**



---

# MISSING

---



---

**CHINOOK SALMON-** CHINOOK SALMONS' MIGRATIONS ARE BREATHTAKING AND HEROIC— FROM THEIR BIRTH STREAM HUNDREDS OR THOUSANDS OF MILES TO THE OCEAN AND THEN BACK TO THEIR BIRTH STREAM AGAIN, NAVIGATING A MULTITUDE OF THREATS ALONG THE WAY. THEIR RETURN TO THE WATERS WHERE THEY WERE BORN, TO SPAWN A NEW GENERATION AND DIE, IS A CLASSIC TRAGEDY AND WILD HOPE COMBINED. FOR THE PEOPLE OF THE WEST, OUR HISTORY IS DEEPLY INTERTWINED WITH THEIRS.” — FROM CASALMON.ORG

**PLEASE CALL NOW!**

**ASK YOUR REPRESENTATIVE TO SUPPORT THE  
ENDANGERED SPECIES ACT AND TO SUPPORT  
FEDERAL PROTECTION OF THE CHINOOK SALMON.**

---

**[WWW.ENDANGERED.ORG](http://WWW.ENDANGERED.ORG)**

---

# MISSING

---

---

**CHINOOK SALMON-** CHINOOK SALMONS' MIGRATIONS ARE BREATHTAKING AND HEROIC— FROM THEIR BIRTH STREAM HUNDREDS OR THOUSANDS OF MILES TO THE OCEAN AND THEN BACK TO THEIR BIRTH STREAM AGAIN, NAVIGATING A MULTITUDE OF THREATS ALONG THE WAY. THEIR RETURN TO THE WATERS WHERE THEY WERE BORN, TO SPAWN A NEW GENERATION AND DIE, IS A CLASSIC TRAGEDY AND WILD HOPE COMBINED. FOR THE PEOPLE OF THE WEST, OUR HISTORY IS DEEPLY INTERTWINED WITH THEIRS.” — FROM CASALMON.ORG

**PLEASE CALL NOW!**

**ASK YOUR REPRESENTATIVE TO SUPPORT THE  
ENDANGERED SPECIES ACT AND TO SUPPORT  
FEDERAL PROTECTION OF THE CHINOOK SALMON.**

---

**[WWW.ENDANGERED.ORG](http://WWW.ENDANGERED.ORG)**



---

# MISSING

---



---

**LITTLE BROWN BAT** “THE CONTINUING BAT DIE-OFF ALREADY IS CAUSING ECOLOGICAL AND ECONOMIC IMPACTS. THE NIGHT-FLYING MAMMALS PLAY A CRITICAL ROLE IN KEEPING INSECT POPULATIONS IN CHECK. FEWER BATS WILL LIKELY RESULT IN GREATER USE OF PESTICIDES.” BAT CONSERVATION INTERNATIONAL E-NEWSLETTER

**PLEASE CALL NOW!**

**ASK YOUR REPRESENTATIVE TO SUPPORT THE  
ENDANGERED SPECIES ACT AND TO SUPPORT  
FEDERAL PROTECTION OF LITTLE BROWN BATS.**

---

**[WWW.ENDANGERED.ORG](http://WWW.ENDANGERED.ORG)**

---

# MISSING

---



---

**LITTLE BROWN BAT** “THE CONTINUING BAT DIE-OFF ALREADY IS CAUSING ECOLOGICAL AND ECONOMIC IMPACTS. THE NIGHT-FLYING MAMMALS PLAY A CRITICAL ROLE IN KEEPING INSECT POPULATIONS IN CHECK. FEWER BATS WILL LIKELY RESULT IN GREATER USE OF PESTICIDES.” BAT CONSERVATION INTERNATIONAL E-NEWSLETTER

**PLEASE CALL NOW!**

**ASK YOUR REPRESENTATIVE TO SUPPORT THE  
ENDANGERED SPECIES ACT AND TO SUPPORT  
FEDERAL PROTECTION OF LITTLE BROWN BATS.**

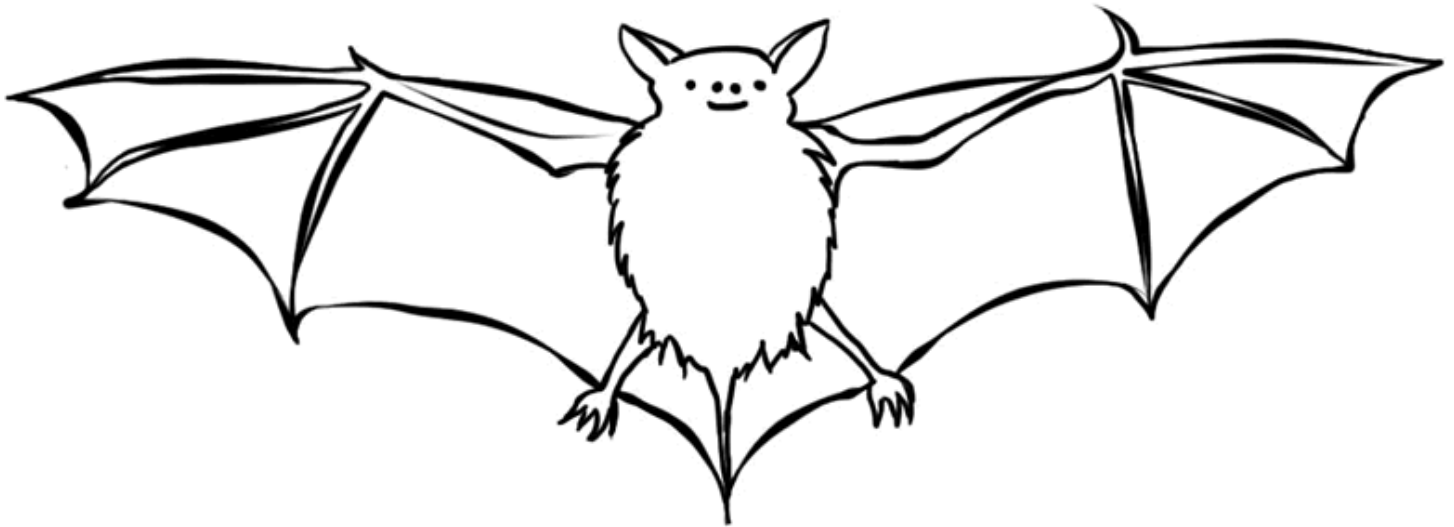
---

**[WWW.ENDANGERED.ORG](http://WWW.ENDANGERED.ORG)**

---

# MISSING

---



---

**LITTLE BROWN BAT** “THE CONTINUING BAT DIE-OFF ALREADY IS CAUSING ECOLOGICAL AND ECONOMIC IMPACTS. THE NIGHT-FLYING MAMMALS PLAY A CRITICAL ROLE IN KEEPING INSECT POPULATIONS IN CHECK. FEWER BATS WILL LIKELY RESULT IN GREATER USE OF PESTICIDES.” BAT CONSERVATION INTERNATIONAL E-NEWSLETTER

**PLEASE CALL NOW!**

**ASK YOUR REPRESENTATIVE TO SUPPORT THE  
ENDANGERED SPECIES ACT AND TO SUPPORT  
FEDERAL PROTECTION OF LITTLE BROWN BATS.**

---

**[WWW.ENDANGERED.ORG](http://WWW.ENDANGERED.ORG)**

---

# MISSING

---

---

**LITTLE BROWN BAT** “THE CONTINUING BAT DIE-OFF ALREADY IS CAUSING ECOLOGICAL AND ECONOMIC IMPACTS. THE NIGHT-FLYING MAMMALS PLAY A CRITICAL ROLE IN KEEPING INSECT POPULATIONS IN CHECK. FEWER BATS WILL LIKELY RESULT IN GREATER USE OF PESTICIDES.” BAT CONSERVATION INTERNATIONAL E-NEWSLETTER

**PLEASE CALL NOW!**

**ASK YOUR REPRESENTATIVE TO SUPPORT THE  
ENDANGERED SPECIES ACT AND TO SUPPORT  
FEDERAL PROTECTION OF LITTLE BROWN BATS.**

---

**[WWW.ENDANGERED.ORG](http://WWW.ENDANGERED.ORG)**



---

# MISSING

---



---

**GREAT WHITE SHARK-** SHARKS HAVE INHABITED EARTH'S OCEANS FOR 400 MILLION YEARS, BUT TODAY THEY ARE DISAPPEARING AT AN ALARMING RATE. "WHITE SHARKS ARE BAROMETERS OF OUR OCEAN'S ECOSYSTEM. IF THEY'RE NOT DOING WELL, WE NEED TO FIGURE OUT WHY. THEY ARE AT THE TOP OF THE FOOD CHAIN. IF WE WANT A HEALTHY OCEAN, WE NEED HEALTHY SHARKS."

**PLEASE CALL NOW!**

**ASK YOUR REPRESENTATIVE TO SUPPORT THE  
ENDANGERED SPECIES ACT AND TO SUPPORT FEDERAL  
PROTECTION OF THE GREAT WHITE SHARKS.**

---

**[WWW.ENDANGERED.ORG](http://WWW.ENDANGERED.ORG)**



---

# MISSING

---



---

**GREAT WHITE SHARK-** SHARKS HAVE INHABITED EARTH'S OCEANS FOR 400 MILLION YEARS, BUT TODAY THEY ARE DISAPPEARING AT AN ALARMING RATE. "WHITE SHARKS ARE BAROMETERS OF OUR OCEAN'S ECOSYSTEM. IF THEY'RE NOT DOING WELL, WE NEED TO FIGURE OUT WHY. THEY ARE AT THE TOP OF THE FOOD CHAIN. IF WE WANT A HEALTHY OCEAN, WE NEED HEALTHY SHARKS."

**PLEASE CALL NOW!**

**ASK YOUR REPRESENTATIVE TO SUPPORT THE  
ENDANGERED SPECIES ACT AND TO SUPPORT FEDERAL  
PROTECTION OF THE GREAT WHITE SHARKS.**

---

**[WWW.ENDANGERED.ORG](http://WWW.ENDANGERED.ORG)**



---

# MISSING

---



---

**GREAT WHITE SHARK-** SHARKS HAVE INHABITED EARTH'S OCEANS FOR 400 MILLION YEARS, BUT TODAY THEY ARE DISAPPEARING AT AN ALARMING RATE. "WHITE SHARKS ARE BAROMETERS OF OUR OCEAN'S ECOSYSTEM. IF THEY'RE NOT DOING WELL, WE NEED TO FIGURE OUT WHY. THEY ARE AT THE TOP OF THE FOOD CHAIN. IF WE WANT A HEALTHY OCEAN, WE NEED HEALTHY SHARKS."

**PLEASE CALL NOW!**

**ASK YOUR REPRESENTATIVE TO SUPPORT THE  
ENDANGERED SPECIES ACT AND TO SUPPORT FEDERAL  
PROTECTION OF THE GREAT WHITE SHARKS.**

---

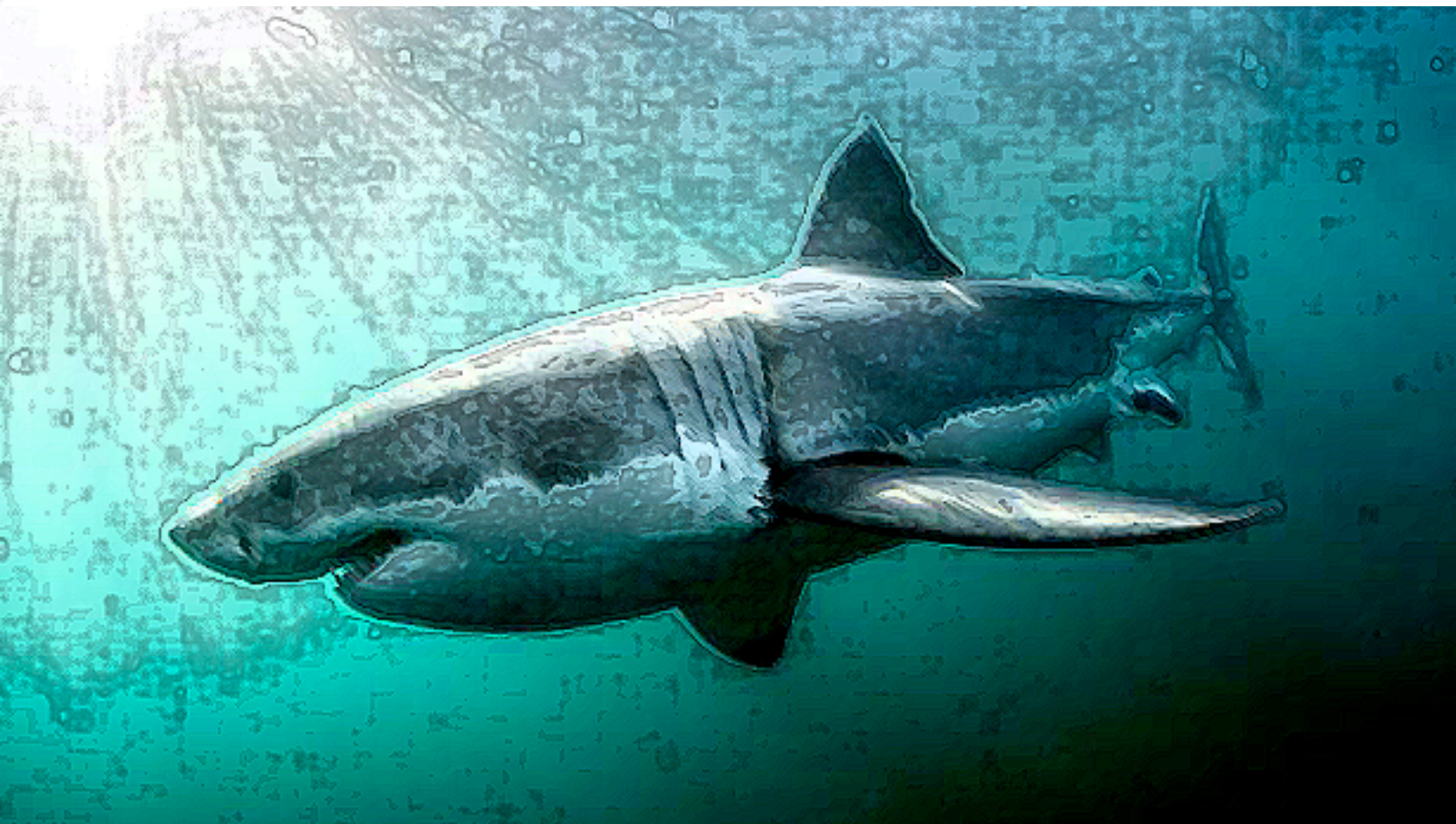
**[WWW.ENDANGERED.ORG](http://WWW.ENDANGERED.ORG)**



---

# MISSING

---



---

**GREAT WHITE SHARK-** SHARKS HAVE INHABITED EARTH'S OCEANS FOR 400 MILLION YEARS, BUT TODAY THEY ARE DISAPPEARING AT AN ALARMING RATE. "WHITE SHARKS ARE BAROMETERS OF OUR OCEAN'S ECOSYSTEM. IF THEY'RE NOT DOING WELL, WE NEED TO FIGURE OUT WHY. THEY ARE AT THE TOP OF THE FOOD CHAIN. IF WE WANT A HEALTHY OCEAN, WE NEED HEALTHY SHARKS."

**PLEASE CALL NOW!**

**ASK YOUR REPRESENTATIVE TO SUPPORT THE  
ENDANGERED SPECIES ACT AND TO SUPPORT FEDERAL  
PROTECTION OF THE GREAT WHITE SHARKS.**

---

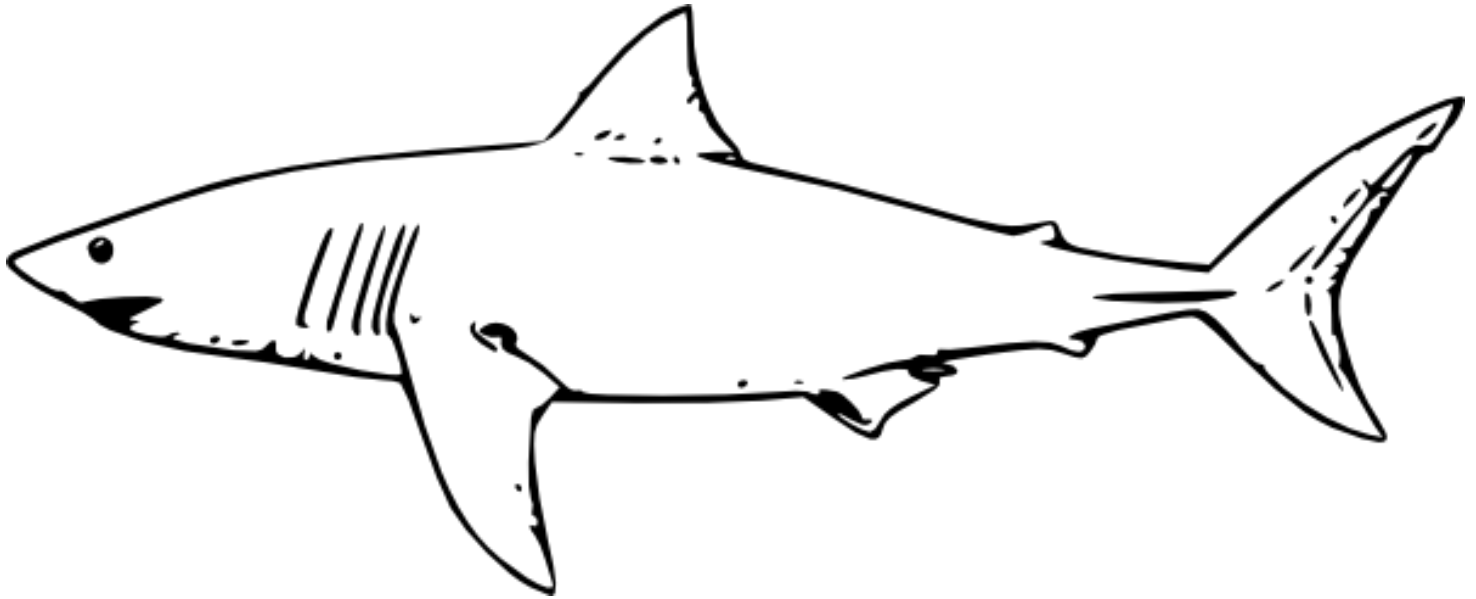
**[WWW.ENDANGERED.ORG](http://WWW.ENDANGERED.ORG)**



---

# MISSING

---



---

**GREAT WHITE SHARK-** SHARKS HAVE INHABITED EARTH'S OCEANS FOR 400 MILLION YEARS, BUT TODAY THEY ARE DISAPPEARING AT AN ALARMING RATE. "WHITE SHARKS ARE BAROMETERS OF OUR OCEAN'S ECOSYSTEM. IF THEY'RE NOT DOING WELL, WE NEED TO FIGURE OUT WHY. THEY ARE AT THE TOP OF THE FOOD CHAIN. IF WE WANT A HEALTHY OCEAN, WE NEED HEALTHY SHARKS."

**PLEASE CALL NOW!**

**ASK YOUR REPRESENTATIVE TO SUPPORT THE  
ENDANGERED SPECIES ACT AND TO SUPPORT FEDERAL  
PROTECTION OF THE GREAT WHITE SHARKS.**

---

**[WWW.ENDANGERED.ORG](http://WWW.ENDANGERED.ORG)**

---

# MISSING

---

---

**GREAT WHITE SHARK-** SHARKS HAVE INHABITED EARTH'S OCEANS FOR 400 MILLION YEARS, BUT TODAY THEY ARE DISAPPEARING AT AN ALARMING RATE. "WHITE SHARKS ARE BAROMETERS OF OUR OCEAN'S ECOSYSTEM. IF THEY'RE NOT DOING WELL, WE NEED TO FIGURE OUT WHY. THEY ARE AT THE TOP OF THE FOOD CHAIN. IF WE WANT A HEALTHY OCEAN, WE NEED HEALTHY SHARKS."

**PLEASE CALL NOW!**

**ASK YOUR REPRESENTATIVE TO SUPPORT THE  
ENDANGERED SPECIES ACT AND TO SUPPORT FEDERAL  
PROTECTION OF THE GREAT WHITE SHARKS.**

---

**[WWW.ENDANGERED.ORG](http://WWW.ENDANGERED.ORG)**



**TAKE A NUMBER AND REMEMBER TO CALL YOUR REPRESENTATIVE, OR EVEN BETTER CALL NOW!**

**TAKE A NUMBER AND REMEMBER TO CALL YOUR REPRESENTATIVE, OR EVEN BETTER CALL NOW!**

[illegible]